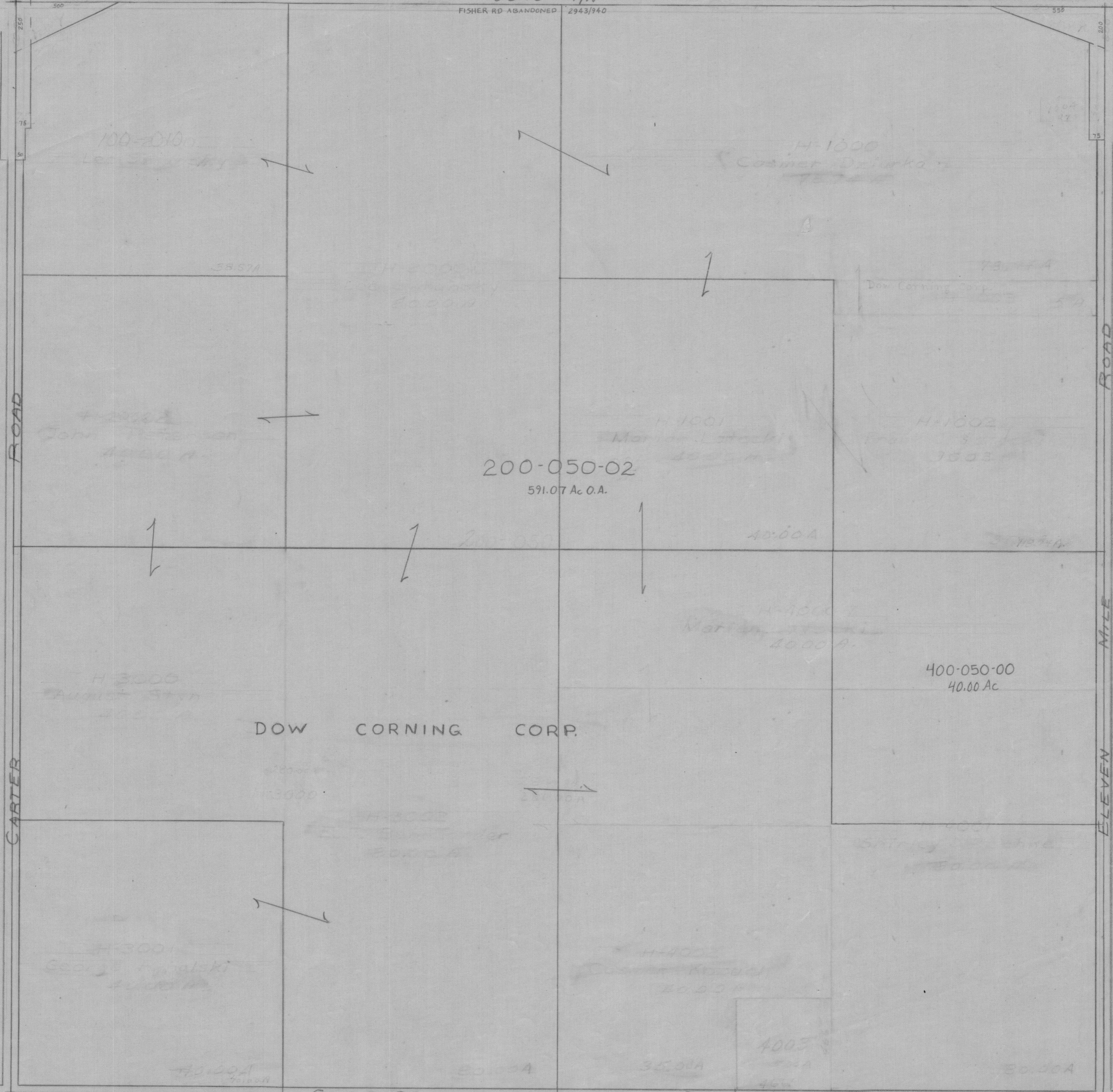


US-10 R/W  
FISHER RD ABANDONED 2943/940



CARTER ROAD

ROAD

MILE

ELEVEN

SALZBURG ROAD

ROAD

DOW CORNING CORP.

200-050-02  
591.07 Ac O.A.

400-050-00  
40.00 Ac

100-010

H-1000

H-1001

H-1002

H-1006

H-3000

H-3002

H-4002

H-3001

H-3003

H-4001

09-140-028-

SECTION 28  
T.14N. R.3E.